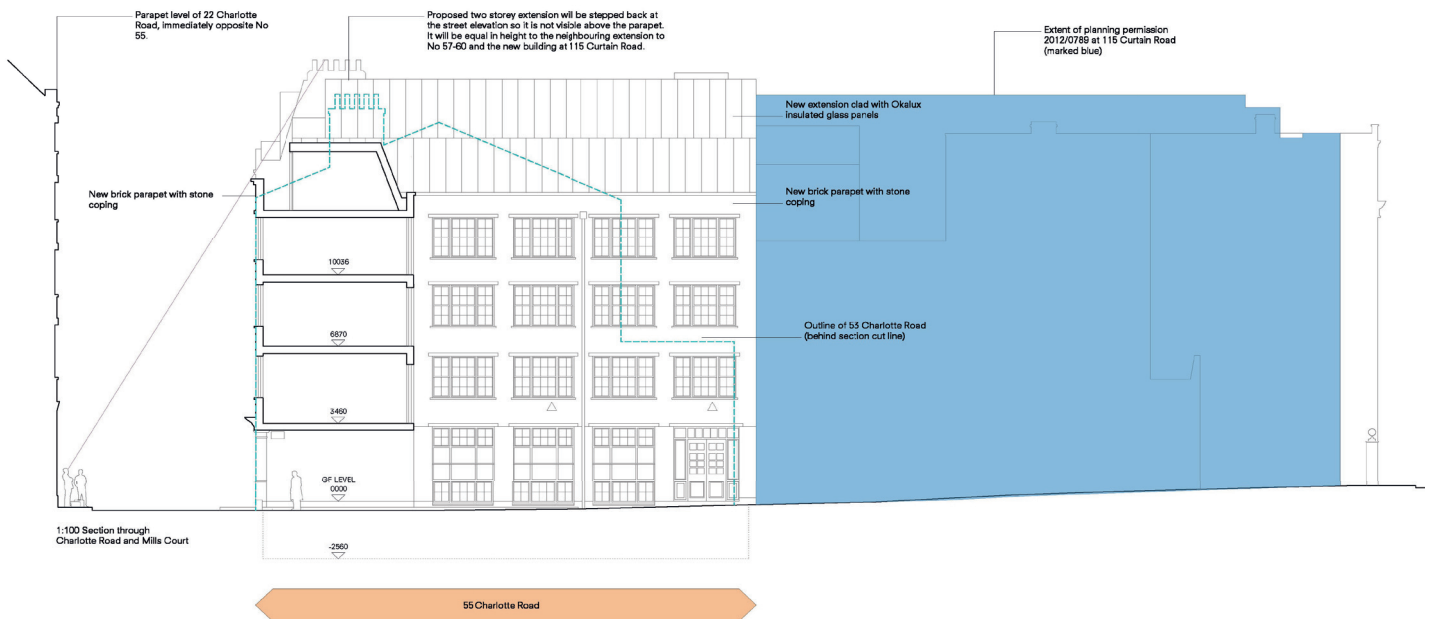




Alpine Club Headquarters Refurbishment and Extension

CLIENT: Alpine Club
LOCATION: Shoreditch, London

DURATION: 18 months



The Alpine Club was looking to develop a two storey roof extension and make some internal alterations. The club itself is the oldest mountaineering and Alpine Club in the world, boasting the largest collection of Alpine and Himalayan artefacts.

Details

The successful completion of this work would enable the club to embark on its modernisation programme which includes a new lecture theatre, webcast facilities, member facilities, and modern archives. Unfortunately, the project had been refused planning permission prior to Prospus being engaged.

The project itself held a number of considerations, chief among these was the heritage impact a two storey roof extension would have on an adjacent listed building that sits within the south Shoreditch conservation area. Naturally, improvements to the public realm and biodiversity were included in the proposal and daylight and sunlight assessments were conducted.

In securing the planning permission, the team at Prospus also had to consider London planning regulations in line with the National Planning Policy Framework that takes into account density increases in London.

Prospus successfully appealed the planning refusal through careful application of planning policies, a heritage assessment, and a clear appeal argument. With the green light secured the Alpine Club were able to push forward with their planned vertical extension which forms an important part of the club's programme of modernisation.

Prospus delivered this project on time and within budget.

